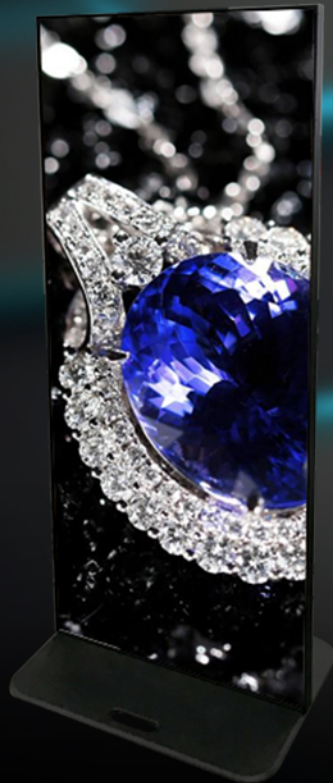


KingPad Series



Part Number	K2-II	K3-II
Pixel pitch	2.8mm	3.9mm
LED type	SMD2020(Black)	SMD2020(Black)
Pixel configuration	1R1G1B	1R1G1B
Size of module	250mmx250mm	250mmx250mm
Resolution of module	88x88	64x64
Density(dots/m ²)	123904	65536
Cabinet material	Alu	Alu
Size of cabinet(mm)	765x1765x75.7	765x1765x75.7
Support hanging or not	Yes	Yes
Weight of cabinet	30KG	30KG
Max power consumption	600W/m ²	600W/m ²
Average power consumption	200W/m ²	200W/m ²
Colors	16.7M	16.7M
Gray scale	16bits	16bits
Color temperature	3000-10000K	3000-10000K
Driving method	1/22 scanning	1/16 scanning
Refresh frequency	3000Hz	3000Hz
Brightness	800cd/m ²	900cd/m ²
Brightness control	256 grade	256 grade
Transmission	Wifi/Lan/4G/USB	Wifi/Lan/4G/USB